

Lab XI-4

Investigating Vertebrate Tissues

Equipment and Materials

You'll need the following items to complete this lab session.

Materials from Kit

☐ None

Materials You Provide

☐ Microscope

☐ Slides, prepared, Vertebrata (see text)

Background

Vertebrates are members of the sub-phylum *Vertebrata* of the phylum *Chordata*. Vertebrates are the organisms that most people think of as animals, including the classes fish, birds, reptiles, amphibians, and mammals.

The defining characteristic of vertebrates is their possession of a *vertebral column* (or spine) consisting of a segmented series of hard, bony *vertebrae* (singular *vertebra*) separated by *intervertebral discs*, which provide mobility and allow the spine to move and flex. (In other chordates, the spine is a stiff rod of uniform composition that is incapable of flexing.) Vertebrates are also the only members of *Animalia* that possess true brains.

There are many differences among vertebrates. For example, some are *oviparous* (giving birth to eggs that subsequently hatch into live young) while others are *viviparous* (giving birth to live young). Some vertebrates are *ectotherms* (cold-blooded) while others are *homotherms* (warm-blooded). But the similarities among vertebrates—particularly within classes, but even across classes—are much greater than the differences.

In studying vertebrate structures, it's convenient to treat them as a hierarchy: a collection of cells forms a tissue; a collection of tissues forms an organ; and a collection of organs forms an organ system. For example, a collection of cardiac muscle cells makes up cardiac tissue, and a collection of cardiac tissues make up the heart, which in turn is part of the circulatory system.

Form (macro- but particularly micro-morphology) often follows function. Despite sometimes gross morphological differences across species and even classes, the analogous organs perform very similar functions and so tend to resemble each other, more or less. For example, it is difficult or

impossible for someone who is not a vertebrate anatomist to distinguish between, say, cross-sections of a fish liver and a mammal liver, and even that anatomist might be unable to distinguish readily between cross-sections of a pig liver and a chimpanzee liver.

All vertebrate organs are made up of one or more of the four basic tissue types:

Epithelial tissues

Epithelial tissues cover the surfaces and cavities of body structures, and also form many endocrine and exocrine glands. For example, your skin, the inside of your mouth, and your stomach, liver, and pancreas are made up, in whole or in part, of epithelial tissues. Epithelial tissues perform four general functions. First, they protect underlying tissues from dehydration and physical damage. Second, they provide a selectively-permeable barrier that prevents or allows the passage of particular molecules, such as water or nutrients. Third, they secrete specific fluids, such as digestive fluids. Fourth, they provide sensory inputs to the nervous system.

Connective tissues

Connective tissues are found throughout vertebrate bodies, serving in many roles. Bone and bone marrow, cartilage, tendons, adipose tissue, and blood are just some examples of structures made up partially or entirely of connective tissue.

Muscle tissues

Muscle tissues are made up of muscle cells, which contain *contractile filaments* that can contract and expand to change the sizes and shapes of muscle cells. Muscle tissues are classified as *cardiac muscles*, *smooth muscles*, or *skeletal muscles*. The first two types are not under voluntary control, and perform such functions as circulating blood, moving food through the digestive tract, and dilating or contracting pupils in response to changing light levels. Skeletal muscles are under voluntary control and are used to move the body, from tiny motions such as shifting your eyes to gross movements such as kicking a soccer ball. (Some muscular activity—such as focusing your eyes, breathing, or urinating—take place under partial voluntary control and partial involuntary control.)

Nervous tissues

Nervous tissues are the primary component of the brain, spinal cord, and nerves, which together regulate body functions, including thought. Nervous tissues are made up of *neurons*, which transmit electrical impulses, and *neuroglia cells*, which support the neurons. Although all cells have the ability to react to external stimuli, the cells that make up nervous tissues are adapted to transmit impulses over long distances to whichever organs are responsible for dealing with the specific stimulus.

Although nervous impulses are electrical, they propagate at a tiny fraction of the speed of electrical impulses in copper wire or similar conductors. Electrical impulses in wire typically propagate at about 0.7 light speed or roughly 210,000,000 m/s, millions to billions of times faster than the electrical impulses in nerves, which propagate at between 0.1 m/s and 100 m/s.

That's why it takes a noticeable fraction of a second for the reaction when someone taps your knee to test your reflexes. The major reason for that delay is that your nervous system isn't a bunch of individual wires. Instead, it's zillions of nervous cells that are connected together and function more like a bucket brigade than a cable.

One cell delivers the message to the adjoining cell, which turns around and delivers the message to the next cell in line, with a lag involved at each step along the way.

As you work on each procedure, use your textbook or Internet resources to determine which features, structures, organelles, and so forth to look for. For example, when you are examining

slides of epithelial tissues, compare and contrast simple, stratified, and pseudostratified epithelial tissues, and do the same for squamous, columnar, and cuboidal epithelial cells. Identify the basement membrane and any glands present in the epithelial tissue, and note the presence or absence of blood vessels. Record your observations in your lab notebook. Sketch or shoot images of any significant features you observe.

To minimize the number of prepared slides required, we've included many images in this lab session. As always, remember that images are not perfect substitutes for viewing actual slides, so we recommend that you obtain as many prepared slides as possible and use the images only to fill in for slides you don't have.

The standard kit for this book, available from www.thehomescientist.com, includes a disc with high-resolution JPEG files of the photomicrographic images used in this book. Those images can be viewed on any PC (Windows, OS X, or Linux) or tablet.

Procedure XI-4-1: Observing Epithelial Tissues

Epithelial cells and tissues are found throughout vertebrate bodies. Epithelial structures are classified by cell type and tissue layer type:

- *Squamous epithelial cells* are flat and resemble fried eggs.
- *Cuboidal epithelial cells* resemble dice in whole mounts or squares in sectional mounts.
- *Columnar epithelial cells* in longitudinal sections resemble tall, narrow columns, but in cross section they may be confused for squamous or cuboidal cells.

These epithelial cell types may be organized in the following ways:

- *Simple epithelium* has only one layer, which may comprise any of the types of epithelial cells, and is found in tissue that performs absorption or filtration functions. The cell layer in simple epithelium is in direct contact with the *basement membrane*.
- *Stratified epithelium* has two or more layers above the basement membrane, may comprise any combination of epithelial cell types, and is found in any type of tissue that must be resistant to physical abrasion or chemical attack.
- *Pseudo-stratified epithelium* has only one columnar cell layer, but the locations of the nuclei of those cells may make it appear in sectional mounts that the epithelium is stratified.
- *Ciliated epithelium* is a type of pseudo-stratified epithelium in which the outward-facing membrane possesses tiny hair-like structures called *cilia*. Cilia may function as extra-cellular sensors, and may also provide propulsive functions such as moving ova from the ovary down the Fallopian tubes to the uterus or distributing mucus produced by *goblet cells* in the epithelial tissue.
- *Glandular epithelium*—found in *endocrine glands*, *exocrine glands*, and other organs—is made up of highly adapted epithelial cells that do not function as a protective layer. Instead, these cells produce hormones, milk, mucous, digestive fluids, sweat, and other substances.

Examine prepared slides showing the various types of epithelial cells and epithelial structures. As you examine each slide, identify the epithelial cell types present and their arrangement. Figures XI-4-1 through XI-4-21 show examples of epithelial cell types and numerous epithelial structures.

Insert figure here. Use file epithelium-flat-simple-wm-40X.jpg

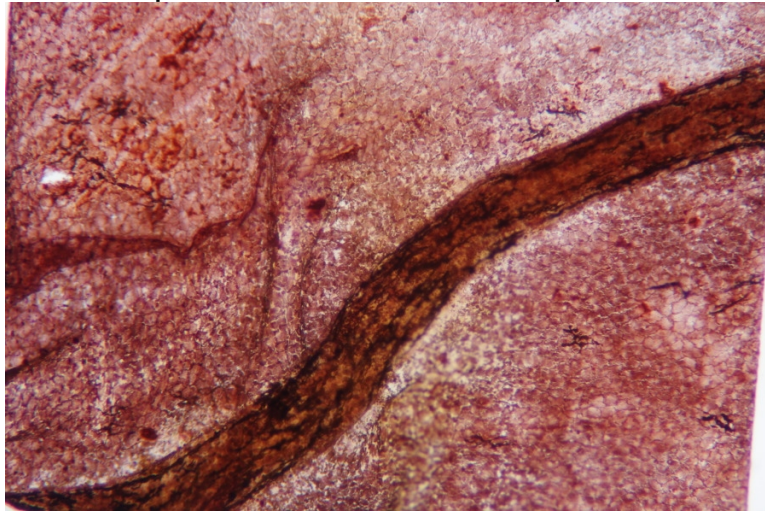


Figure XI-4-1. Flat simple epithelium wm, 40X

Insert figure here. Use file epithelium-flat-stratified-sec-100X.jpg

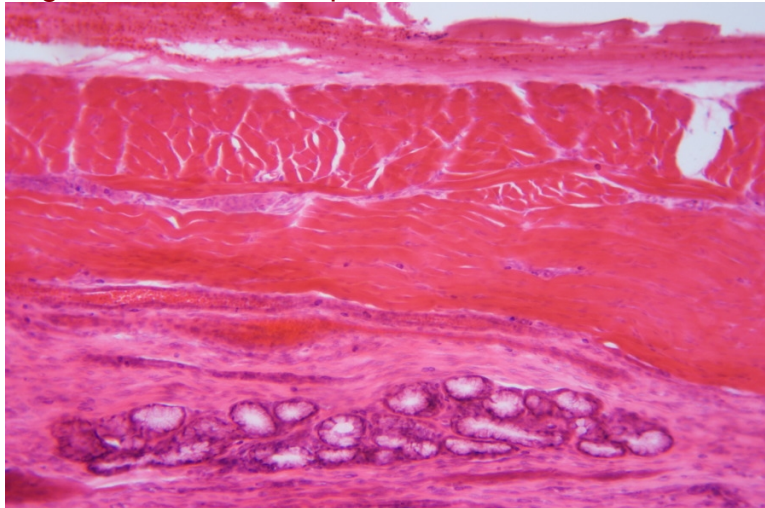


Figure XI-4-2. Flat stratified epithelium sec, 100X

Insert figure here. Use file epithelium-ciliated-sec-100X.jpg

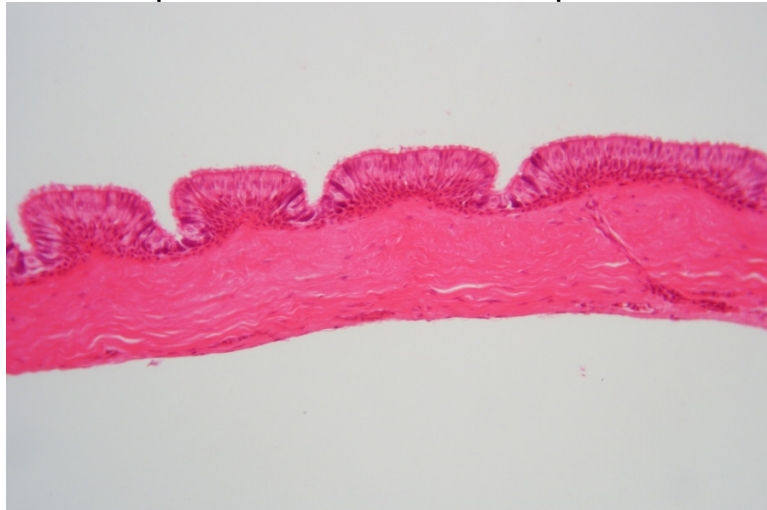


Figure XI-4-3. Ciliated epithelium sec, 100X

Insert figure here. Use file skin-human-sec-through-hair-follicle-40X.jpg

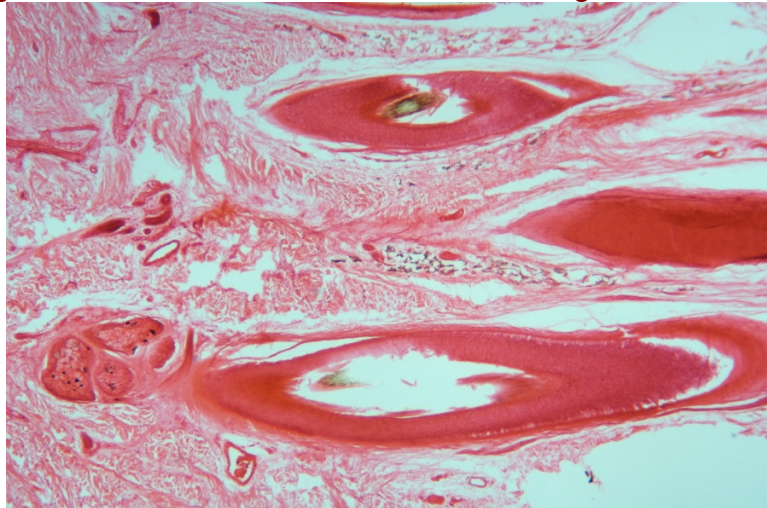


Figure XI-4-4. Human (Homo sapiens) skin sec through hair follicle, 40X

Insert figure here. Use file skin-human-sec-through-sweat-gland-40X-small.jpg

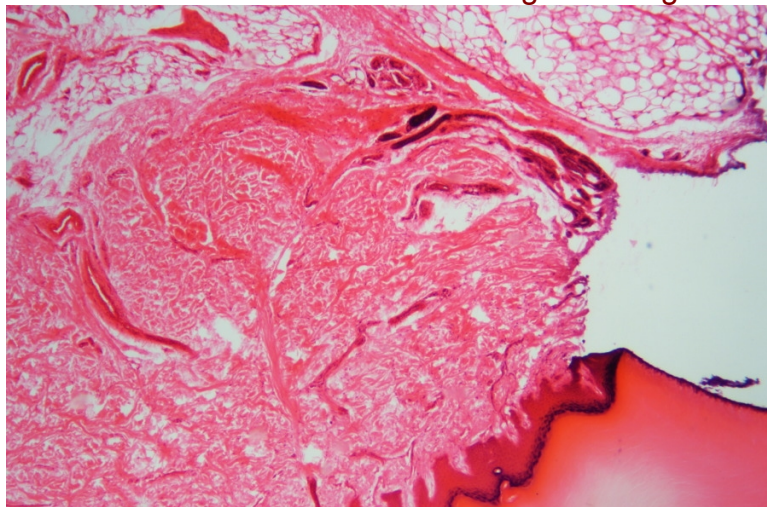


Figure XI-4-5. Human (Homo sapiens) skin sec through sweat gland, 40X

Insert figure here. Use file tongue-cs-40X.jpg

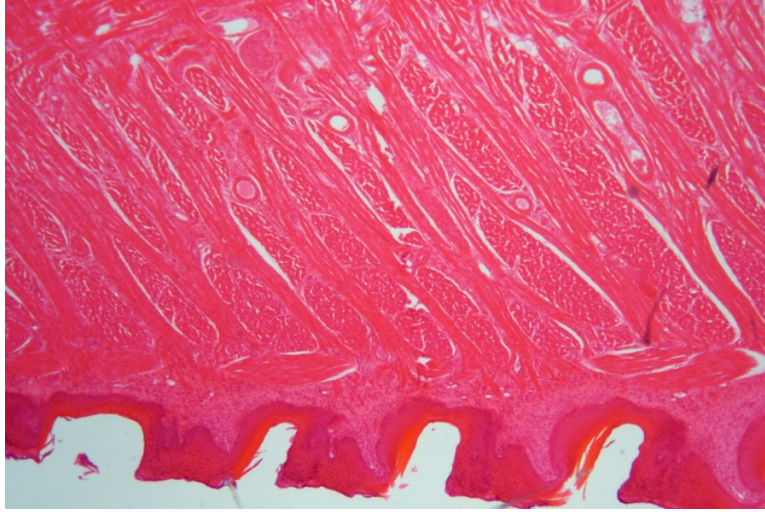


Figure XI-4-6. Mammal tongue cs, 40X

Insert figure here. Use file 48-rabbit-Ochotona-sp-taste-buds-sec-40X.jpg

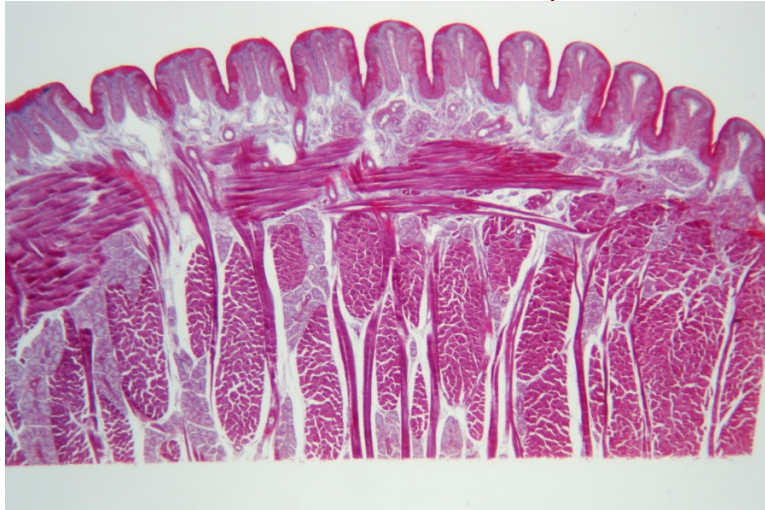


Figure XI-4-7. Pika (Ochotona sp.) taste buds sec, 40X

Insert figure here. Use file esophagus-mammal-cs-40X.jpg

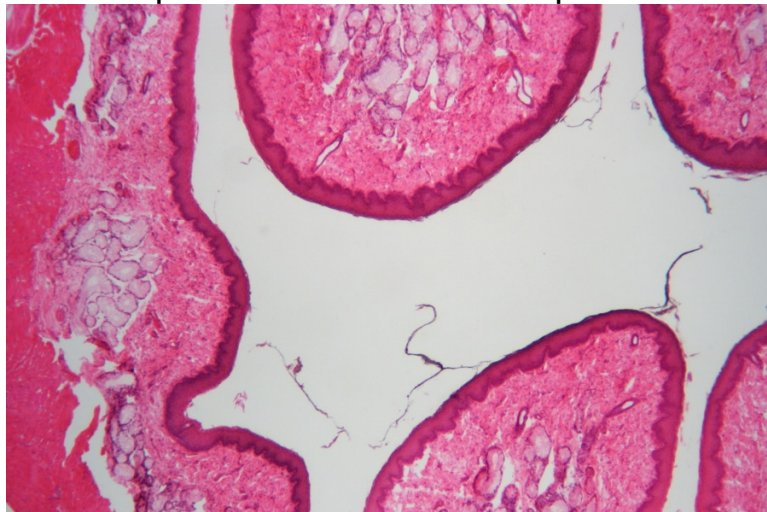


Figure XI-4-8. Mammal esophagus cs, 40X

Insert figure here. Use file 51-dog-Canis-familiaris-stomach-wall-sec-40X.jpg

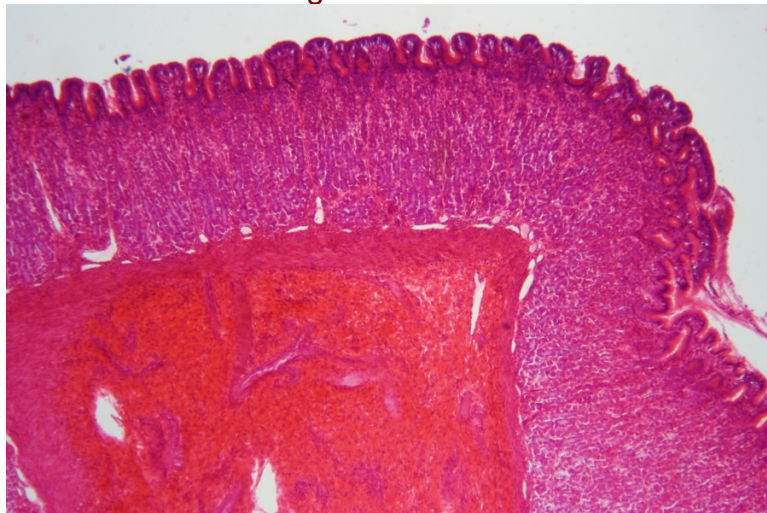


Figure XI-4-9. Dog (Canis lupus familiaris) stomach wall sec, 40X

Insert figure here. Use file 52-dog-Canis-familiaris-small-intestine-cs-40X.jpg

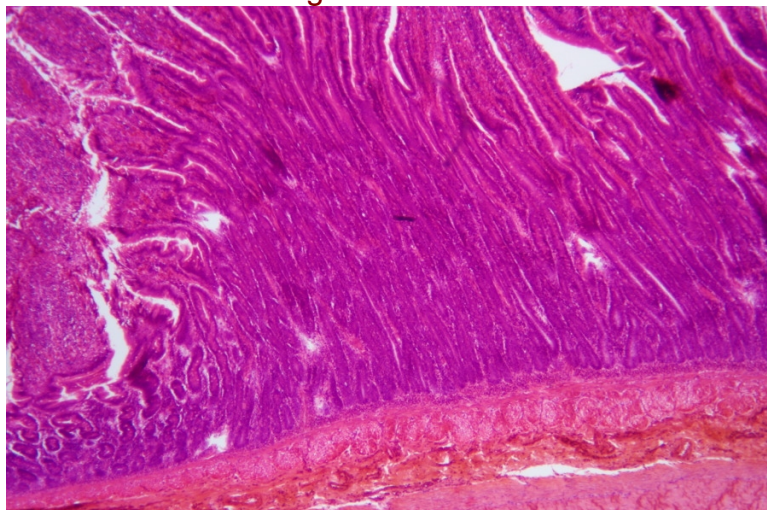


Figure XI-4-10. Dog (Canis lupus familiaris) small intestine cs, 40X

Insert figure here. Use file 53-dog-Canis-familiaris-pancreas-sec-40X.jpg

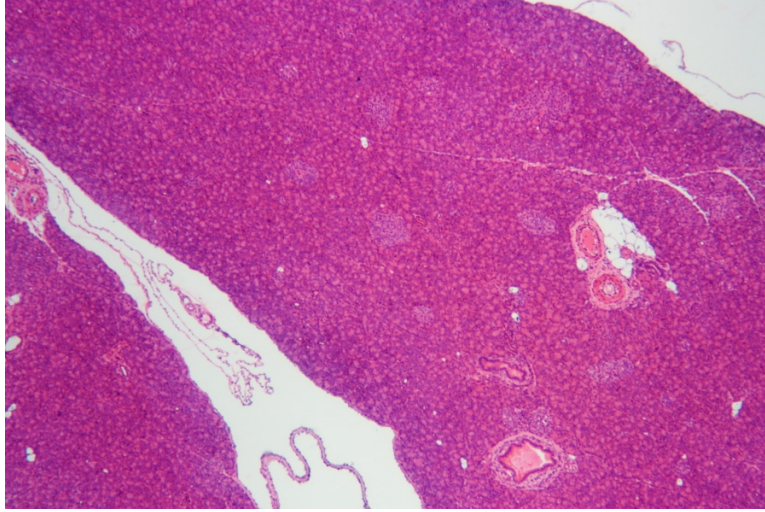


Figure XI-4-11. Dog (Canis lupus familiaris) pancreas cs, 40X

Insert figure here. Use file kidney-ls-40X.jpg

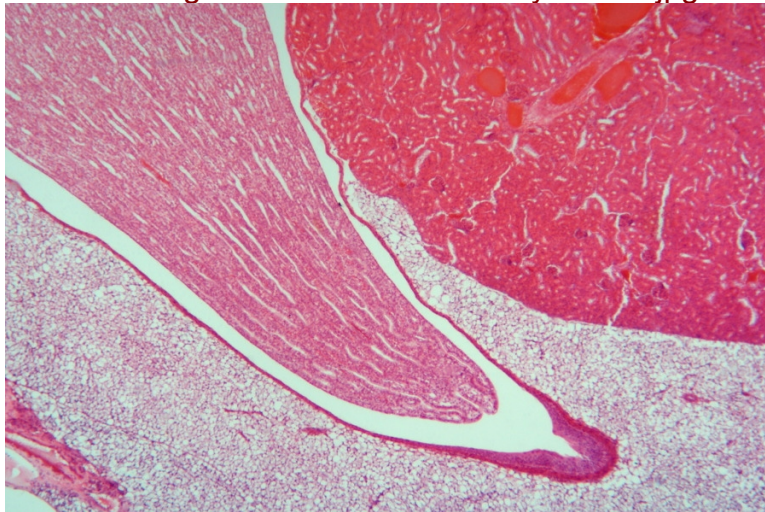


Figure XI-4-12. Mammal kidney ls, 40X

Insert figure here. Use file 54-mouse-Mus-muscula-kidney-ls-40X.jpg

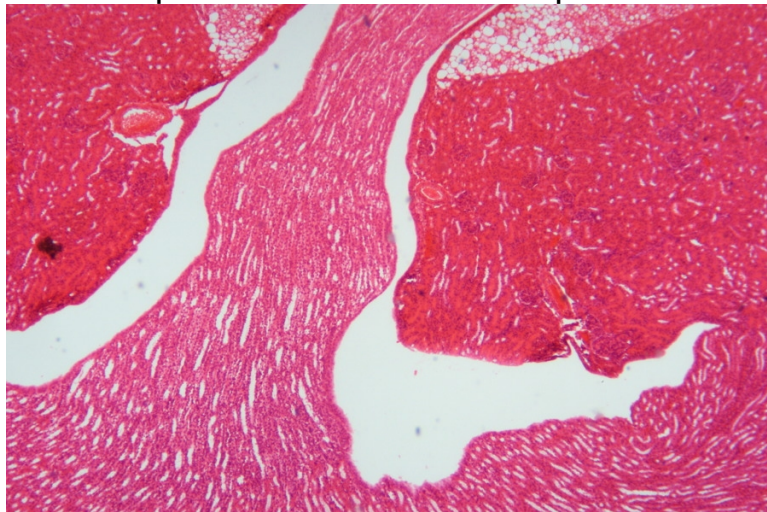


Figure XI-4-13. Mouse (*Mus muscula*) kidney Is, 40X
Insert figure here. Use file kidney-injected-cs-40X.jpg

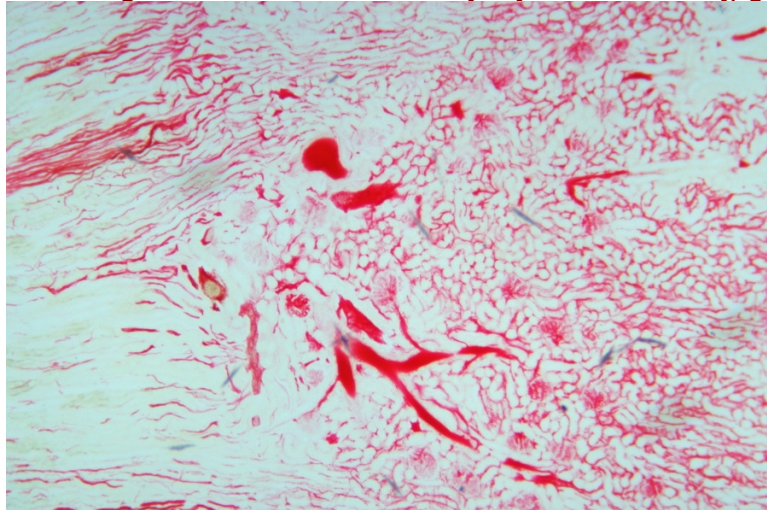


Figure XI-4-14. Kidney (dye-injected) cs, 40X
Insert figure here. Use file liver-sec-40X.jpg

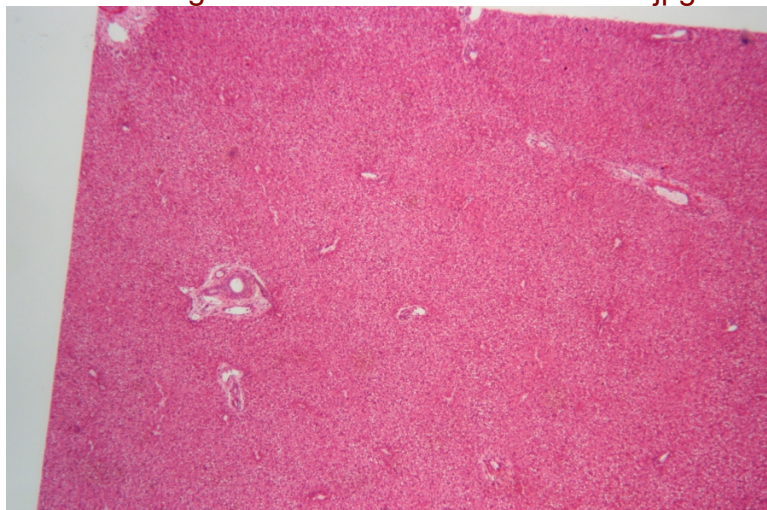


Figure XI-4-15. Liver sec, 40X

Insert figure here. Use file HN1-211-ovary-sec-trichrome-40X.jpg

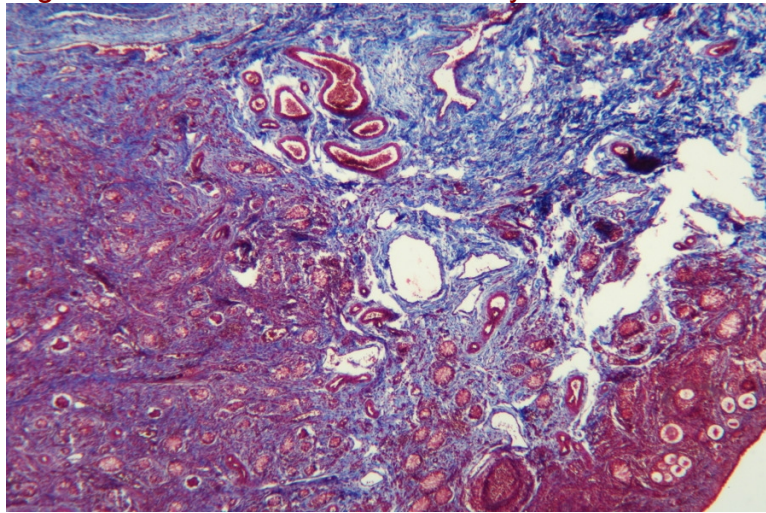


Figure XI-4-16. Mammal ovary sec, 40X

Insert figure here. Use file HM1-5-mammal-testis-epididymis-40X.jpg

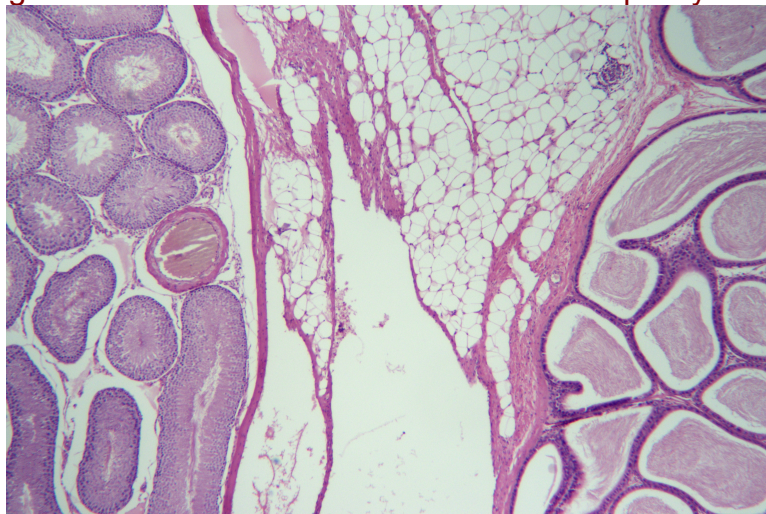


Figure XI-4-17. Mammal testis and epididymis sec, 40X

Insert figure here. Use file mammal-testis-sec-100X.jpg

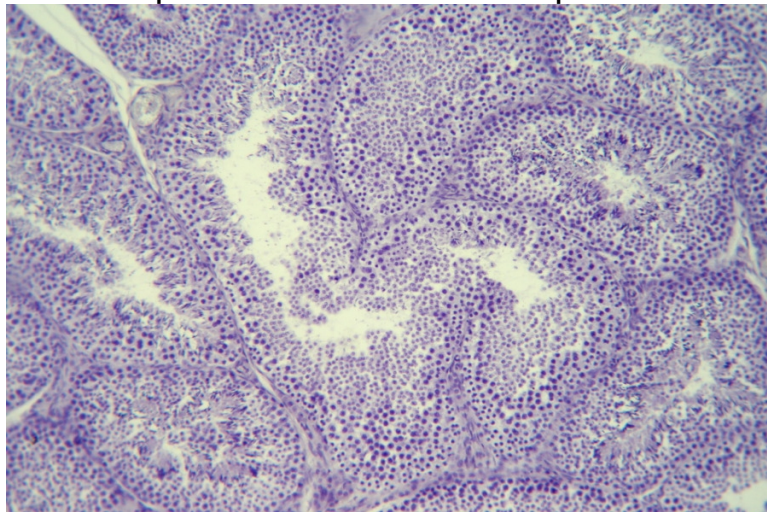


Figure XI-4-18. Mammal testis sec, 100X

Insert figure here. Use file mammal-uterus-sec-40X.jpg

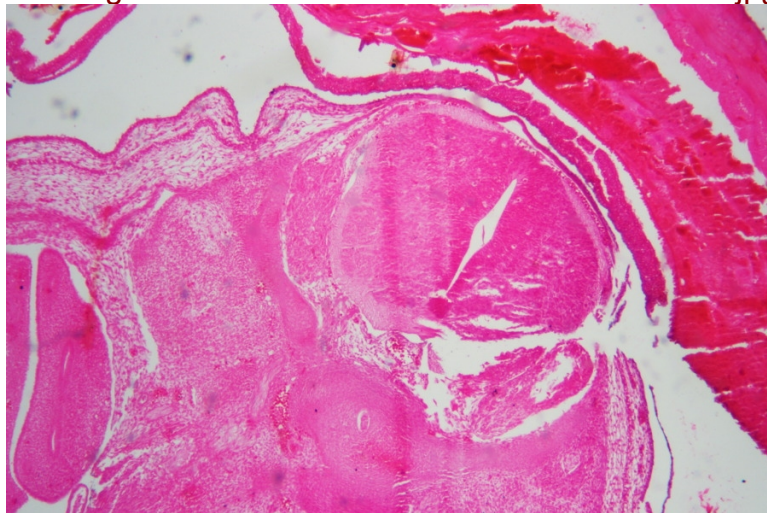


Figure XI-4-19. Mammal uterus sec, 40X

Insert figure here. Use file 36-frog-Rana-catesbeiana-blastula-sec-100X.jpg

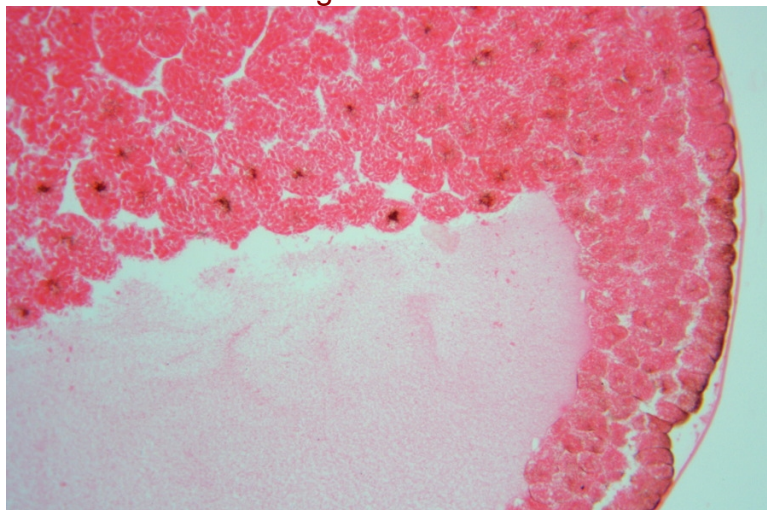


Figure XI-4-20. Frog (Rana catesbeiana) blastula (young embryo) sec, 100X

Insert figure here. Use file 37-frog-Rana-catesbeiana-late-gastrula-sec-40X.jpg

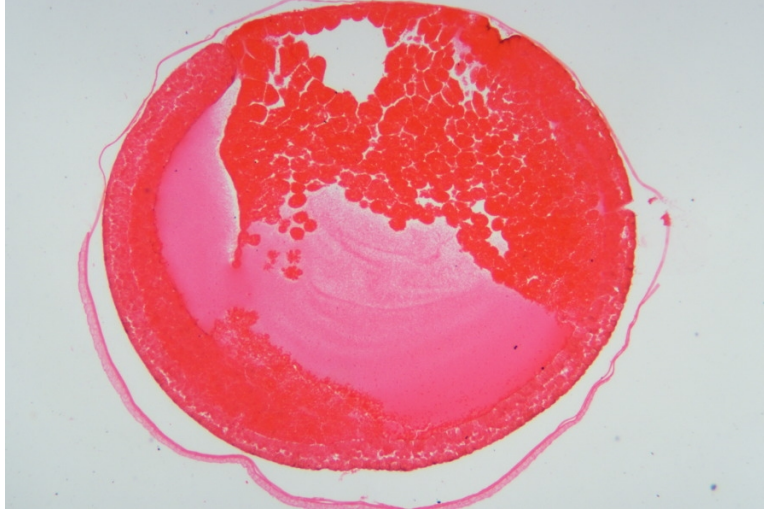


Figure XI-4-21. Frog (Rana catesbeiana) late gastrula (older embryo) sec, 40X

Various vertebrate classes have adapted by forming specialized exterior surface epithelial structures such as the scales of fish, the feathers of birds, and the hair of mammals. Examine prepared slides of as many of these structures as you have available, and consider how the morphology of the various structures is adapted to suit particular functions. Figures XI-4-22 through XI-4-26 show several of these specialized structures.

Insert figure here. Use file 34-goldfish-Carassius-auratus-scale-wm-40X.jpg

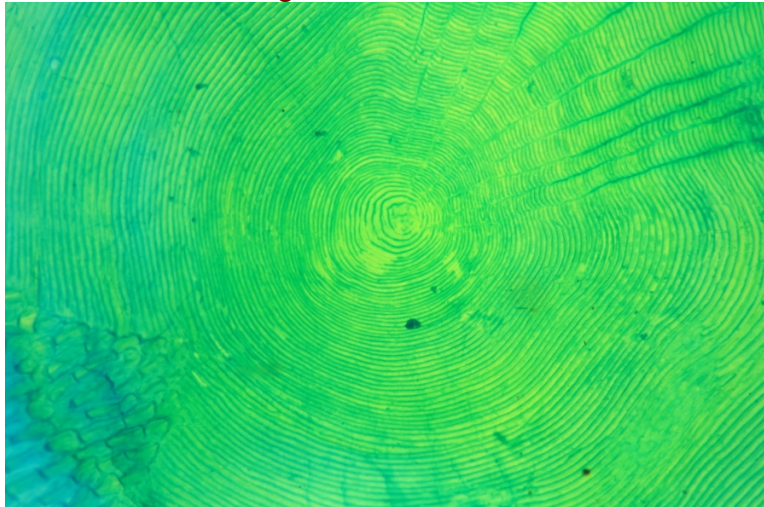


Figure XI-4-22. Goldfish (Carassius auratus) scale wm, 40X

Insert figure here. Use file 39-sparrow-Passer-rutilans-contour-feather-wm-40X.jpg

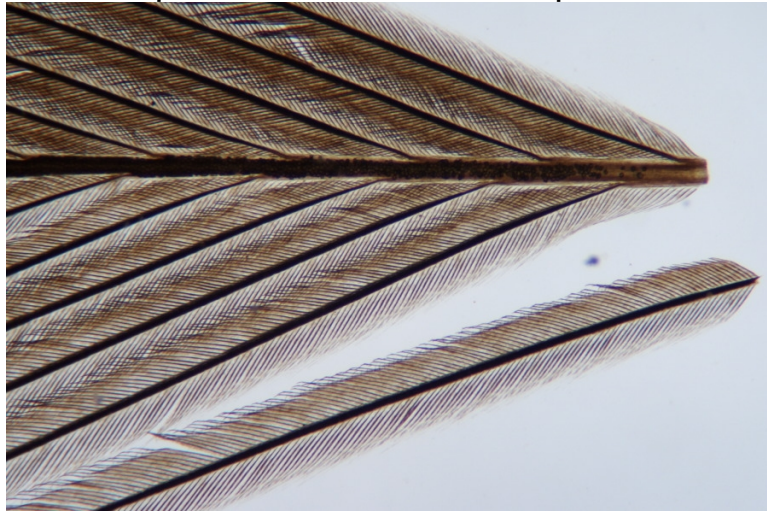
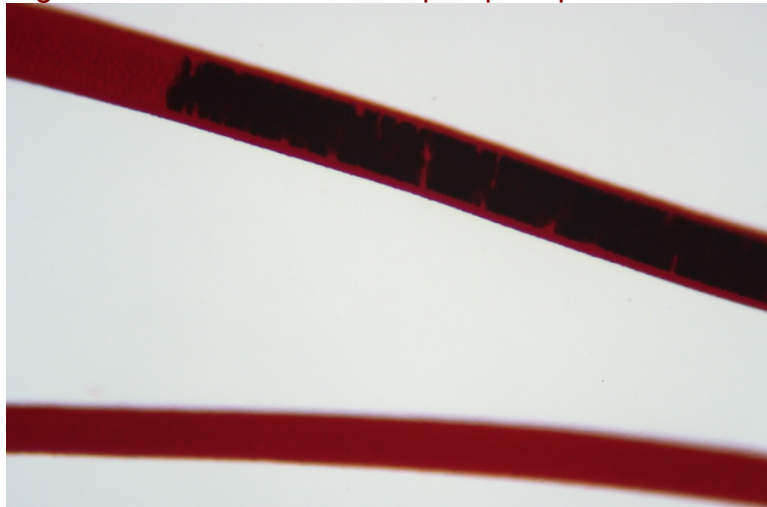


Figure XI-4-23. Sparrow (Passer rutilans) contour (pennaceous) feather wm, 40X
Insert figure here. Use file 39-sparrow-Passer-rutilans-down-feather-wm-40X.jpg



Figure XI-4-24. Sparrow (Passer rutilans) down feather wm, 40X
Insert figure here. Use file 59-sheep-capra-sp-wool-wm-100X.jpg



Insert figure here. Use file 60-sheep-capra-sp-wool-cs-400X.jpg

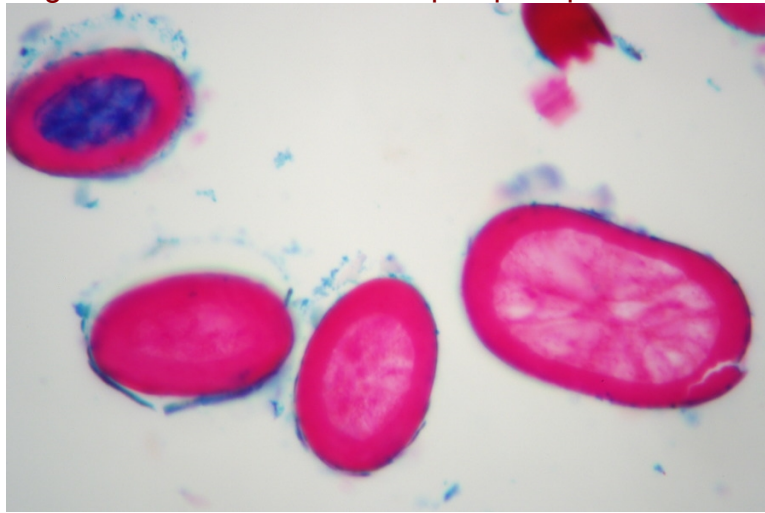


Figure XI-4-26. Sheep (Capra sp.) wool cs, 400X

Procedure XI-4-2: Observing Connective Tissues

Connective tissue (CT) is the most diverse of the four tissue types, and is found throughout vertebrate bodies. CT performs numerous functions, including providing a structural framework for the body, storing food energy, protecting organs against physical damage, and distributing oxygen to and removing carbon dioxide from other tissues and organs.

CT is made up of specialized cells and an extracellular matrix produced by those cells. That matrix is made up of a transparent, homogeneous liquid known as *ground substance* and fibers of any of three types: *collagenous fibers*, *elastic fibers*, and *reticular fibers*. These fibers strengthen the CT in the same way that re-bar strengthens reinforced concrete. Because they can be stretched and then return to their original shape and size, elastic fibers provide flexibility to CT.

Connective tissue makes up numerous body structures in whole or in part, including adipose tissue; blood and lymphatic tissue; bones and bone marrow; the capsules, cartilage, ligaments, and tendons that support the skeleton; and the fibrous framework of muscle tissues. There are three categories of connective tissue.

Embryonic connective tissue

Embryonic connective tissue occurs in two sub-types, *mesenchyme* and *muroid*, both of which are made up of mesenchymal cells and reticular fibers embedded in ground substance. Mesenchymal cells are pluripotent (undifferentiated juvenile) cells which can be triggered to form various types of adult cells, including adult connective tissue cells. Muroid CT, found in the umbilical cords of mammals, is very similar to mesenchyme CT, but with a much sparser distribution of cells and fibers. Because reticular fibers are invisible without special staining, ECT is normally visible in standard prepared slides as only an apparently random scattering of cells in a clear background of ground substance.

Ordinary connective tissue

Ordinary connective tissue (also called *proper connective tissue*) subtypes include *loose connective tissue*, also called *areolar connective tissue*, and *dense connective tissue*, which is further subdivided into *regular dense connective tissue* and *irregular*

dense connective tissue. Loose CT is found throughout the body, surrounding and providing support for other structures, such as nerves and blood vessels, as well as anchoring and binding together other tissues and organs. Dense CT, found in tendons and similar structures, has a much higher density of collagen connective fibers.

Special connective tissue

Special connective tissue subtypes include adipose (fatty) tissue, blood, bone, cartilage, hematopoietic tissue (bone marrow), and lymphatic tissue, each of which has a characteristic extra-cellular matrix.

Although adipose tissue is classified as a special CT, it is found in conjunction with loose CT, which supports the fatty adipose cells (visible in Figures XI-4-28, XI-4-31, and many other figures in this session). At first glance, an adipose cell may appear to be just a cell membrane with no nucleus or other contents. In fact, the center of the adipose cell is occupied by lipids (fats), which push the nucleus to the edge of the cell, where it is visible in suitably stained sections as a tiny dark spot.

Examine prepared slides showing loose and dense connective tissue. Figures XI-4-27 through XI-4-30 show examples of these types of connective tissue.

Insert figure here. Use file connective-tissue-loose-wm-40X.jpg

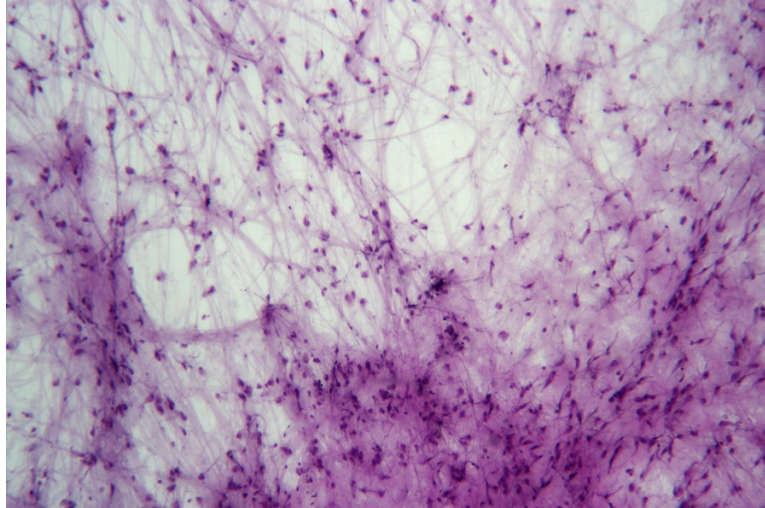


Figure XI-4-27. Loose connective tissue wm, 40X

Insert figure here. Use file artery-vein-cs-40X.jpg

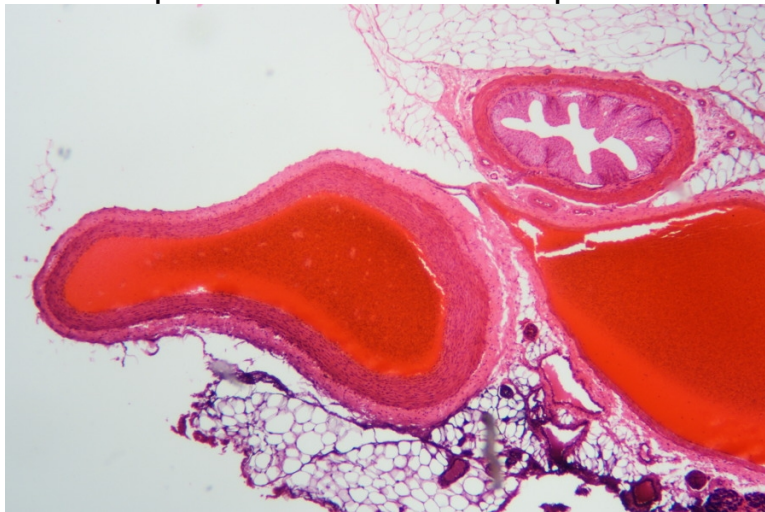


Figure XI-4-28. Artery and vein cs showing loose CT and adipose CT, 40X

Insert figure here. Use file connective-tissue-dense-wm-100X.jpg

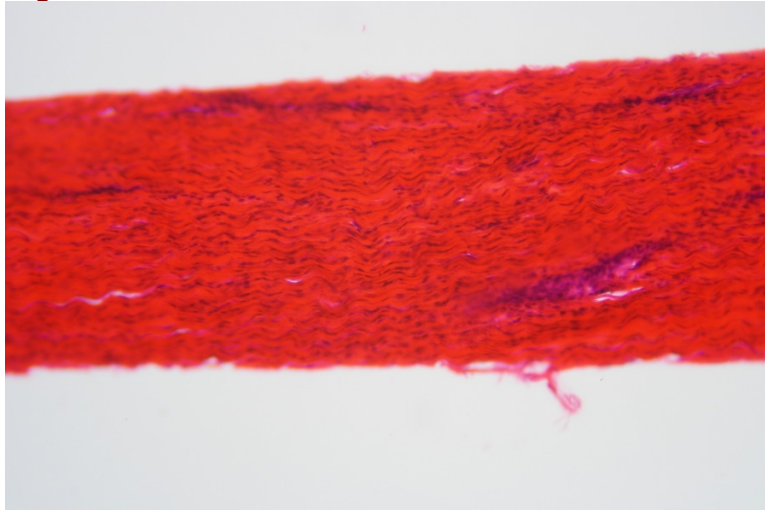


Figure XI-4-29. Dense connective tissue wm, 100X

Insert figure here. Use file tendon-rabbit-sec-100X.jpg

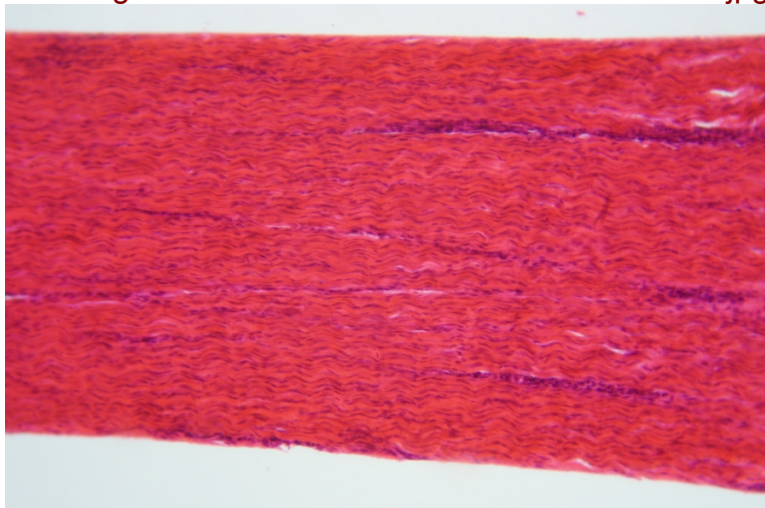


Figure XI-4-30. Rabbit tendon (dense CT) sec, 100X

Insert figure here. Use file lymph-node-sec-40X.jpg

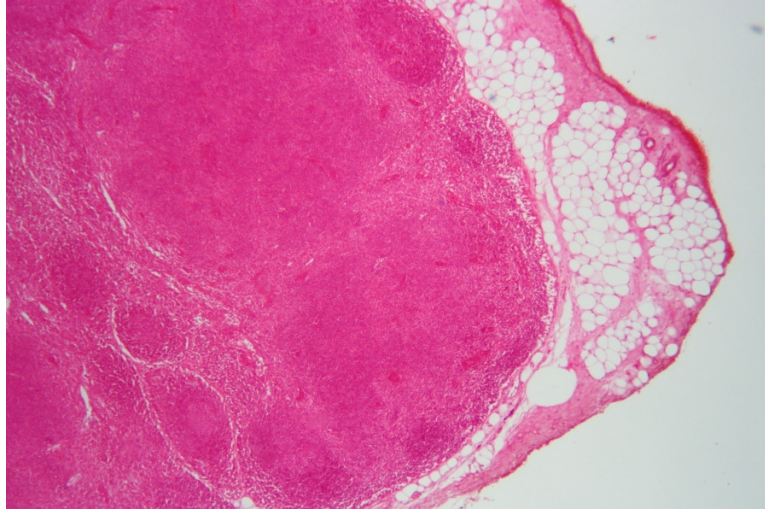


Figure XI-4-31. Lymph node sec, 40X

Although it may seem odd to classify blood as a special connective tissue, that is in fact what it is. Like other special CTs, blood consists of individual specialized cells rather sparsely distributed in an extra-cellular matrix. For blood, that matrix is called *plasma*.

Erythrocytes or *red blood cells*—which carry oxygen to the body's cells and carbon dioxide away—are by far the most common cell type found in blood. *Leukocytes* or *white blood cells*—which are part of the immune system—are much less numerous, as are tiny *platelets*, which are anuclear fragments of bone marrow cells that assist in blood clotting.

Examine a prepared slide of a human blood smear. Identify erythrocytes (numerous, small, and of regular shape), leukocytes (relatively rare, larger, and of less regular shape), and platelets (relatively rare, tiny, and irregular). Examine other prepared slides of blood smears from other vertebrates. Figures XI-4-32 through XI-4-35 show examples of blood from several species.

The red color of the cells in these figures results from staining, which obscures the actual color.

Insert figure here. Use file 40-human-Homo-sapiens-blood-sm-400X.jpg

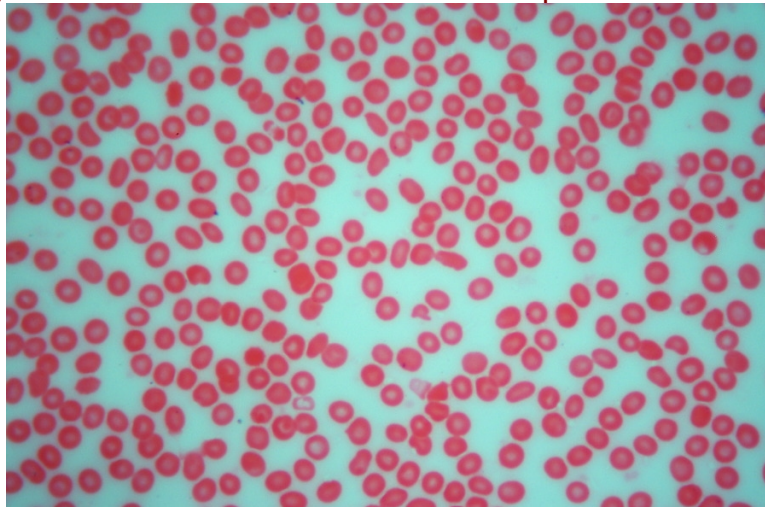


Figure XI-4-32. Human (Homo sapiens) blood sm, 400X

Insert figure here. Use file 33-goldfish-Carassius-auratus-blood-sm-400X.jpg

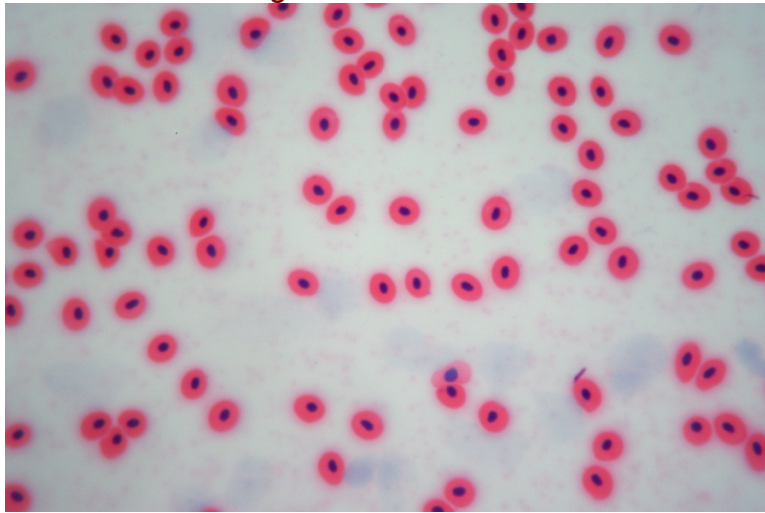


Figure XI-4-33. Goldfish (Carassius auratus) blood sm, 400X

Insert figure here. Use file 35-eel-Amphiuma-congo-blood-sm-400X.jpg

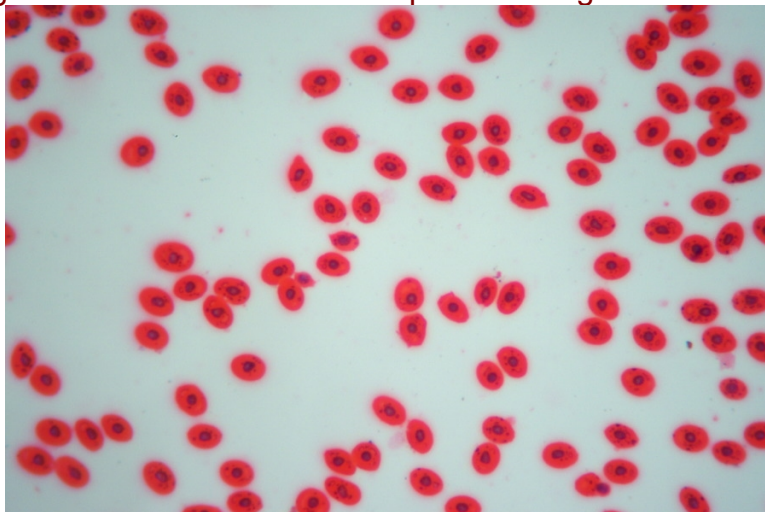


Figure XI-4-34. Eel (Amphiuma congo) blood sm, 400X

Insert figure here. Use file 38-frog-Rana-catesbeiana-blood-sm-400X.jpg

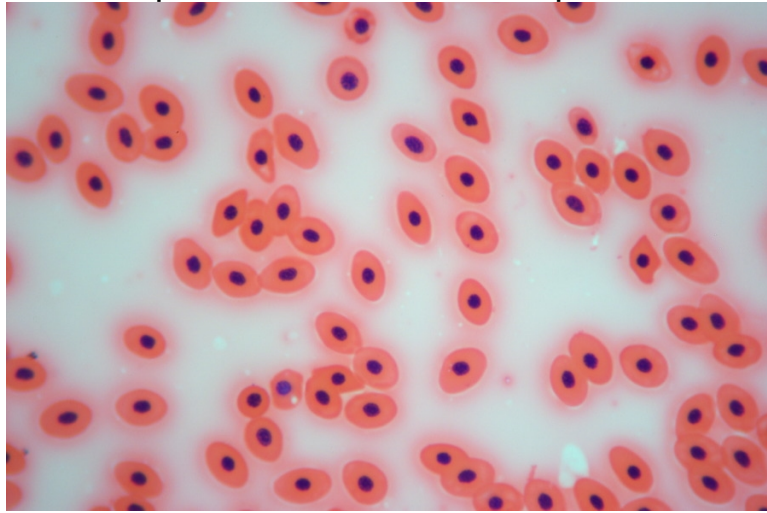


Figure XI-4-35. Frog (Rana catesbeiana) blood sm, 400X

Cartilage is a semi-rigid special CT that is softer and more flexible than bone and harder and less flexible than muscle. Cartilage comprises cells called **chondrocytes** embedded in cavities called **lacunae** in an extracellular matrix of collagen fibers suspended in a gelatinous material called **chondrin**.

There are two sub-types of cartilage. **Hyaline cartilage** is the harder and more rigid, and is found as “padding” between the bearing surfaces where two bones would otherwise come into direct contact. **Elastic cartilage** is softer and more flexible, and is found in structures such as the larynx, external ear, and nose.

Examine prepared slides of cartilage in whole-mount as well as sections of hyaline and flexible cartilage. Figures XI-4-36 through XI-4-38 show examples.

Insert figure here. Use file 41-boar-Sus-scrofa-cartilage-wm-100X.jpg

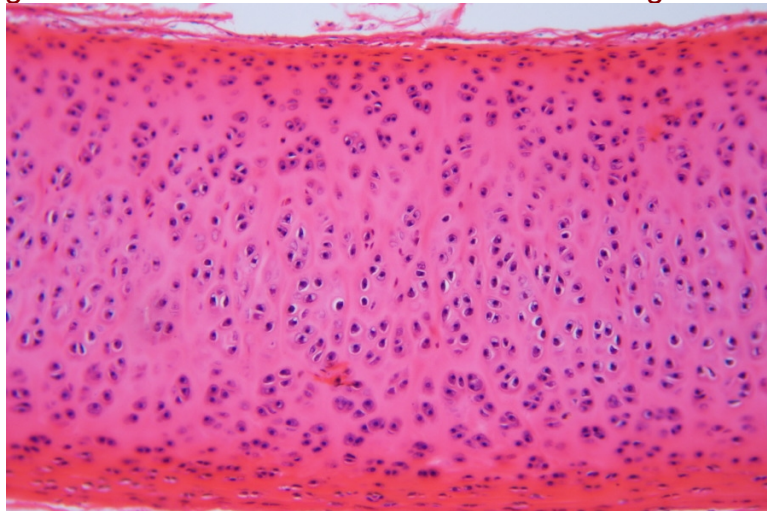


Figure XI-4-36. Boar (Sus scrofa) cartilage wm showing chondrocytes in lacunae, 100X

Insert figure here. Use file cartilage-hyaline-sec-100X.jpg

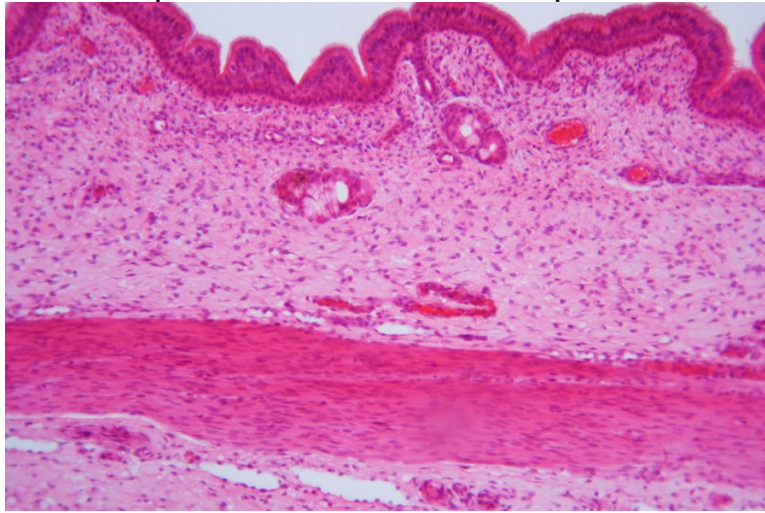


Figure XI-4-37. Hyaline cartilage sec, 100X

Insert figure here. Use file cartilage-elastic-sec-100X.jpg

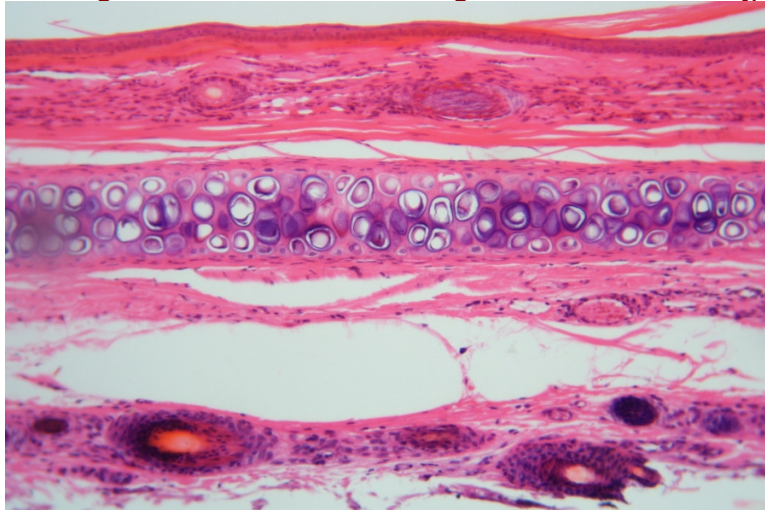


Figure XI-4-38. Elastic cartilage sec, 100X

Bone is made up of bone cells called **osteocytes** embedded in lacunae in the extracellular matrix. The hardness and rigidity of bone relative to cartilage results from the composition of that matrix. In cartilage, the matrix is made up of collagen fibers suspended in chondrin, a gel-like material. In bone, the matrix is made up of collagen fibers suspended in an extremely hard and stiff substrate called **bone mineral**, which is made up of crystalline calcium salts that geologists call **hydroxyapatite**. Yep, a rock. (Well, technically, a mineral.)

Compact bone (also called **cortical bone**, **hard bone**, or **dense bone**) is extremely dense, strong and rigid, and forms the hard shell of bones. **Spongy bone** (also called **trabecular bone** or **cancellous bone**) is much less dense and relatively weak, and forms parts of the interior of bones, protected by compact bone.

Bone grows by forming **lamellae**, which are thin, concentric layers that resemble the growth rings of trees. Lamellae form around an interconnected network of thin longitudinal channels called **Halversian canals**, with the lamellae forming protective sheaths around the blood vessels and nerves that run through the Halversian canals.

Examine prepared slides of whole-mount and section slides of compact bone and spongy bone.

Insert figure here. Use file 42-human-Homo-sapiens-compact-bone-ground-wm-100X.jpg

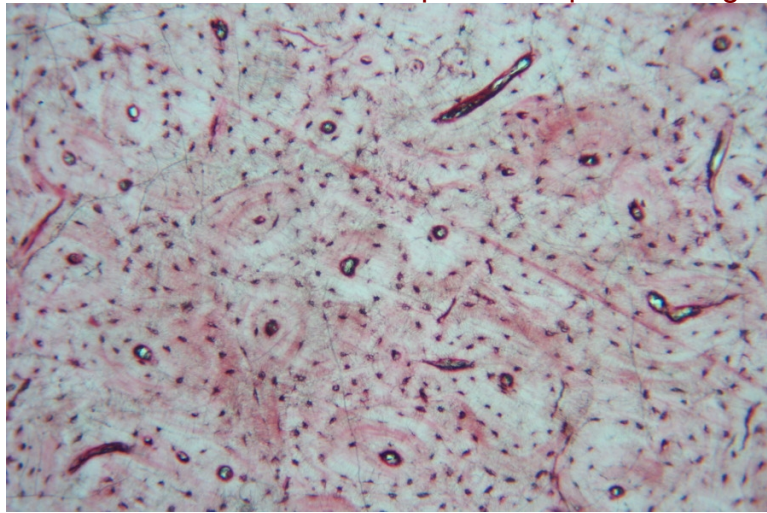


Figure XI-4-39. Human (Homo sapiens) ground compact bone wm, 100X

Insert figure here. Use file bone-hard-grinding-sec-100X.jpg

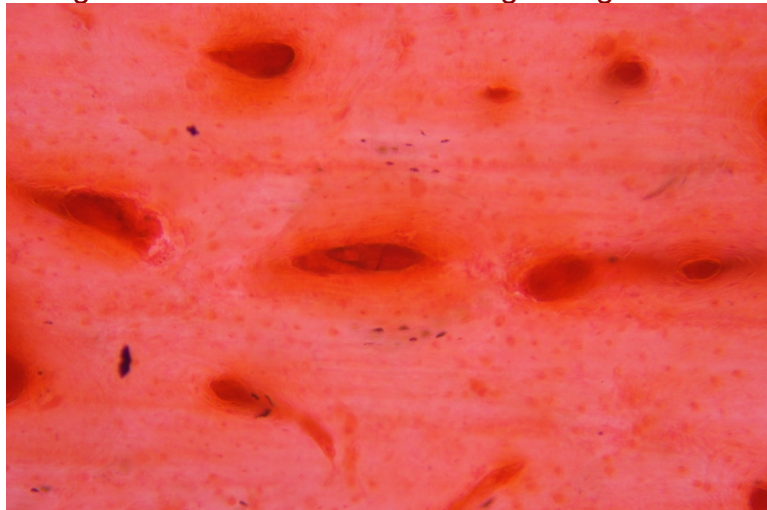


Figure XI-4-40. Ground hard bone sec, 100X

Insert figure here. Use file bone-hard-grinding-decalcified-human-tooth-100X.jpg



Figure XI-4-41. Human (Homo sapiens) ground hard bone (decalcified tooth) sec, 100X

Insert figure here. Use file bone-dense-sec-100X.jpg

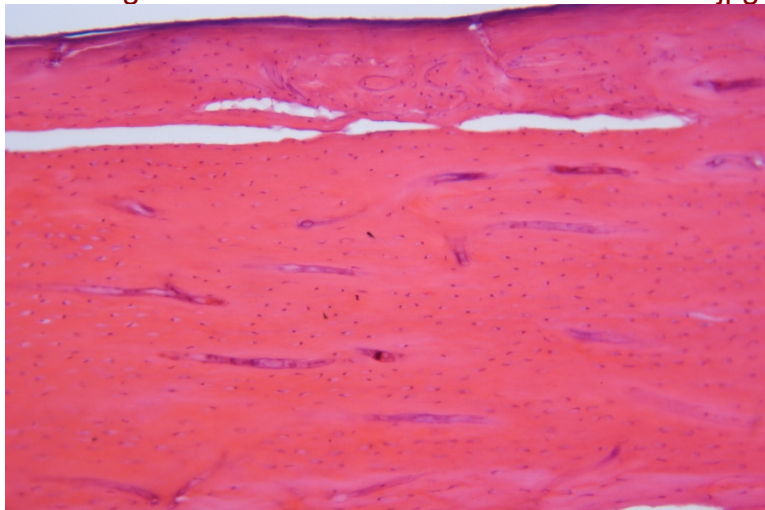
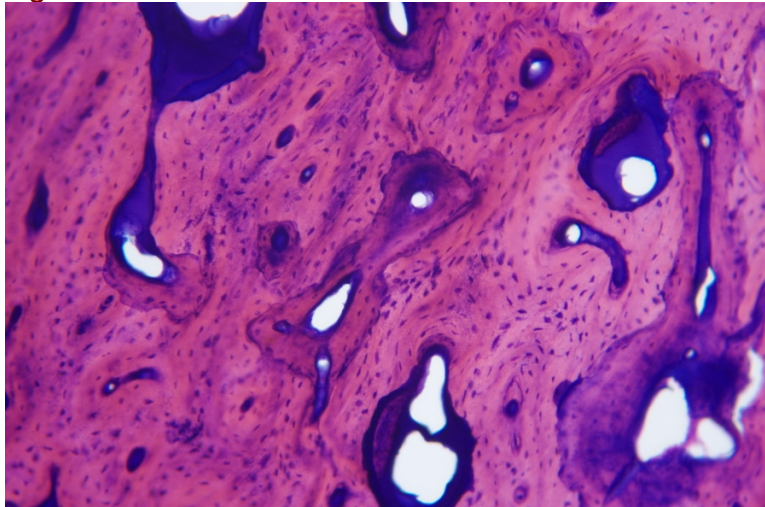


Figure XI-4-42. Dense bone sec, 100X

Insert figure here. Use file 43-boar-Sus-scrofa-bone-sec-100X.jpg



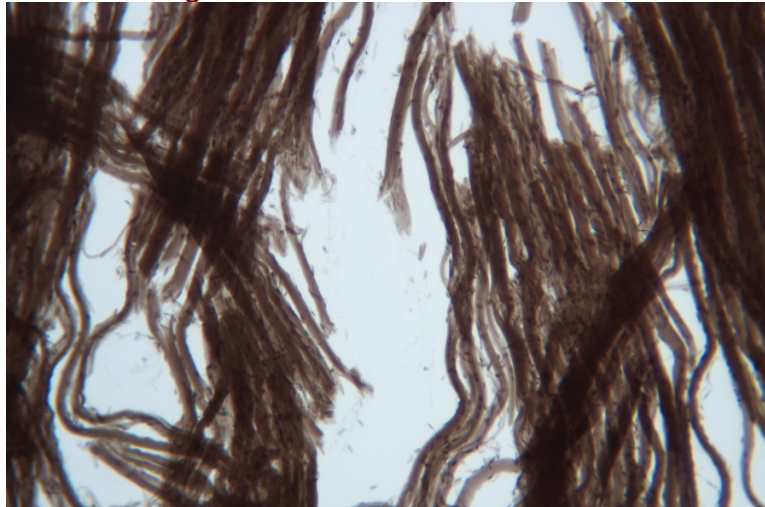
Procedure XI-4-3: Observing Muscle Tissues

The defining characteristic of muscle tissue is that it is able to contract and relax. There are three types of muscle tissue:

- **Skeletal muscle tissue**, also called **voluntary muscle tissue**, is under conscious control, and powers all voluntary movements of the organism. Skeletal muscles range in size and power from the tiny muscles used to control movement of the eyes to the large, powerful muscles of the legs and buttocks. Skeletal muscles connect to bones via tendons, which anchor the muscle to the bone. Contractile cells in voluntary muscles are organized in regular parallel bundles, an arrangement called **striated muscle**. Smooth muscle tissue is made up of tubular muscle cells called **myofibers** or **myocytes**, which contain bundles of contractile filaments called **myofibrils**, which in turn are made up of chains of **sarcomeres**, the basic building block of striated muscle cells.
- **Cardiac muscle tissue**, found only in the heart, is very similar in structure and appearance to skeletal muscle tissue, with the primary difference that cardiac muscles are not under the voluntary control of the organism. Contractile cells in cardiac muscles are striated like those of skeletal muscles, although the arrangement of contractile cells in cardiac muscle is a branching network rather than the parallel arrangement in skeletal muscles.
- **Smooth muscle tissue**, also called **involuntary muscle tissue**, is not under conscious control. Unlike striated muscles, which are adapted for contracting intensely for short periods, smooth muscle is adapted to contract with much less power, but over very long periods. Smooth muscle is found within the walls of internal organs, where it performs such functions as dilation and contraction of blood vessels, peristalsis, and so on.

Examine prepared slides of whole-mount and section slides of skeletal, cardiac, and smooth muscle tissues. Figures XI-4-44 through XI-4-51 show examples.

Insert figure here. Use file 44-dog-Canis-familiaris-teased-striated-muscle-fibers-wm-100X.jpg



*Figure XI-4-44. Dog (Canis lupus familiaris) teased skeletal (striated) muscle fibers
wm, 100X*

Insert figure here. Use file 100-47-skeletal-striated-muscle-sec-100X.jpg

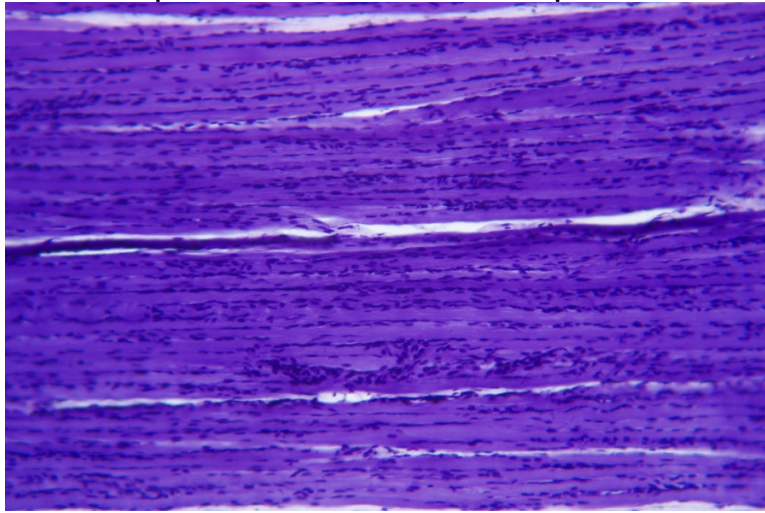


Figure XI-4-45. Skeletal (striated) muscle sec, 100X

Insert figure here. Use file muscle-skeletal-striated-ls-100X.jpg

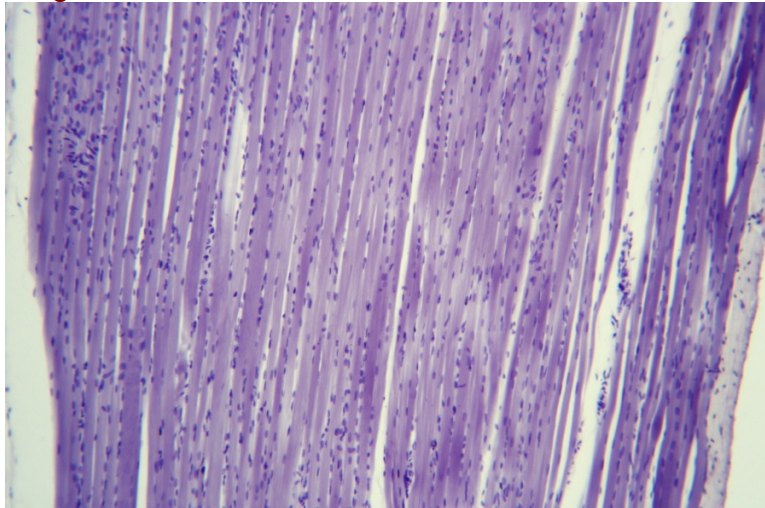


Figure XI-4-46. Striated skeletal muscle ls, 100X

Insert figure here. Use file muscle-skeletal-striated-cs-100X.jpg

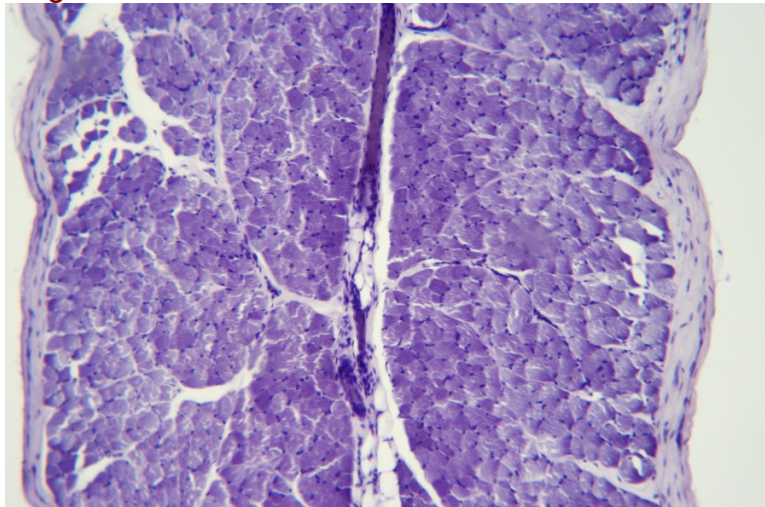


Figure XI-4-47. Striated skeletal muscle cs, 100X

Insert figure here. Use file 100-47-cardiac-muscle-sec-100X.jpg

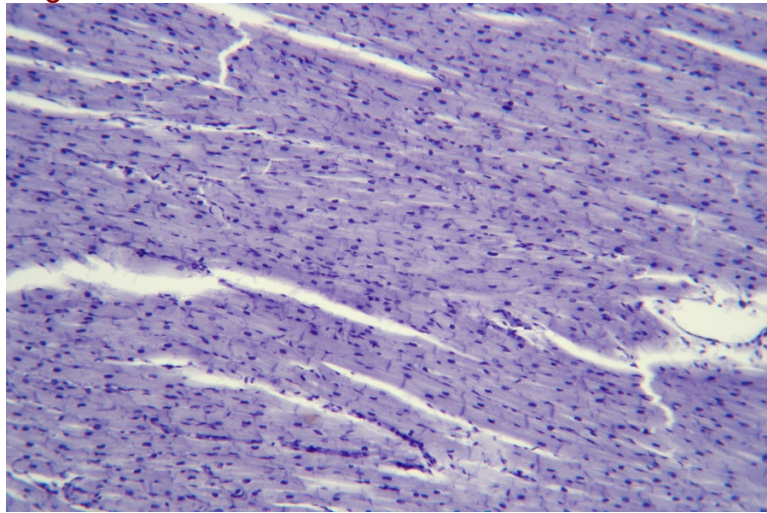


Figure XI-4-48. Mammalian cardiac muscle sec, 100X

Insert figure here. Use file cardiac-muscle-human-sec-100X.jpg

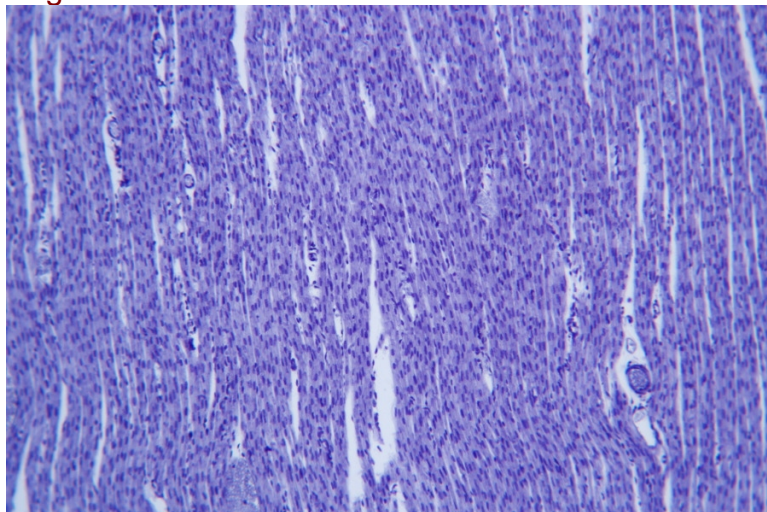


Figure XI-4-49. Human cardiac muscle sec, 100X

Insert figure here. Use file 100-47-smooth-muscle-sec-100X.jpg

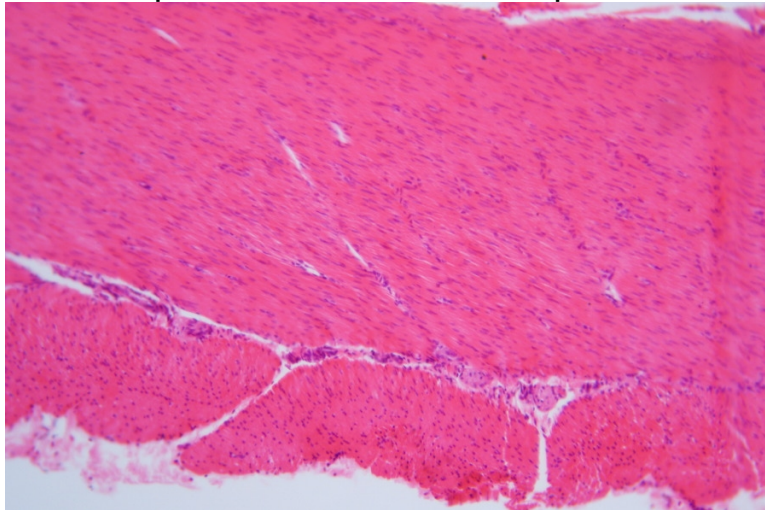


Figure XI-4-50. Smooth muscle sec, 100X

Insert figure here. Use file 49-mouse-Mus-musculus-tail-cs-40X.jpg

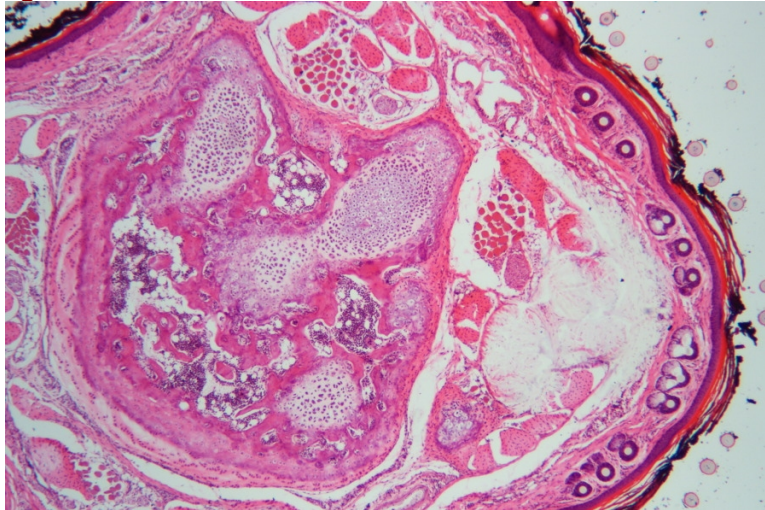


Figure XI-4-51. Mouse (Mus musculus) tail cs, 40X

Procedure XI-4-4: Observing Nervous Tissues

The nervous system—the brain, spinal cord, and nerves—is made up of nervous tissue. Nervous tissue is made up of large, complex cell groups called *neurons*, which transmit *nerve impulses*, and supporting cells—including *astrocytes*, *Schwann cells*, and other *neuroglia cells*—that support and work in conjunction with the neurons. Figure XI-4-52 shows a neuron and its associated structures.

Insert figure here. Use file 2000px-Complete_neuron_cell_diagram_en.svg.png

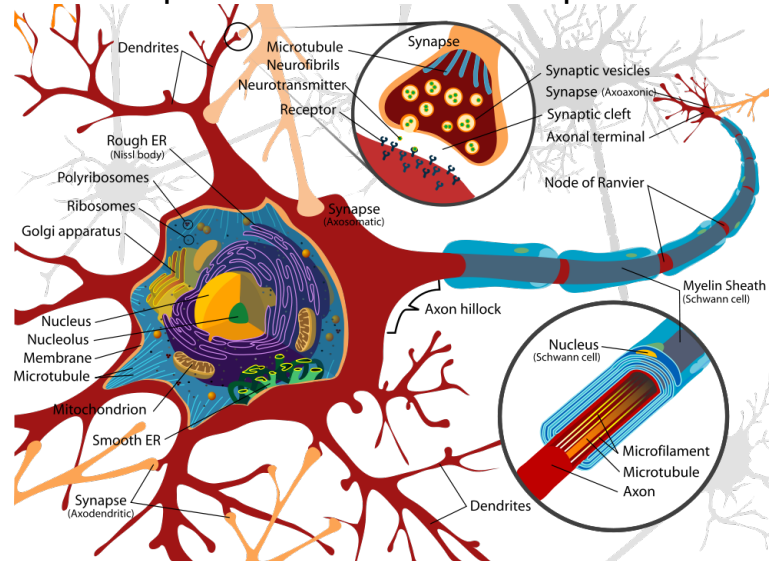


Figure XI-4-52. The structure of a neuron

In addition to the cell body, neurons have two types of cytoplasmic extensions that transmit impulses. A **dendrite** is a short extension that normally carries inbound impulses to the cell body from nearby cells and axons. An **axon** is a long extension that normally carries impulses from the cell body to remote dendrites and cells.

Nerves, found in the peripheral nervous system, are groups of neuron cell fibers (peripheral axons without cell bodies) bound by loose connective tissue called the **endoneurium**, surrounded by a sheath of dense connective tissue called the **epineurium**. **Neural pathways**, which occur in the central nervous system, are made up of bundles of neurons (including cell bodies) surrounded by myelin sheaths, and connect distant parts of the central nervous system with each other.

Examine prepared slides of whole-mount and section slides of nervous tissues. Figures XI-4-53 through XI-4-55 show examples.

Insert figure here. Use file 45-dog-Canis-familiaris-cerebellum-sec-100X.jpg

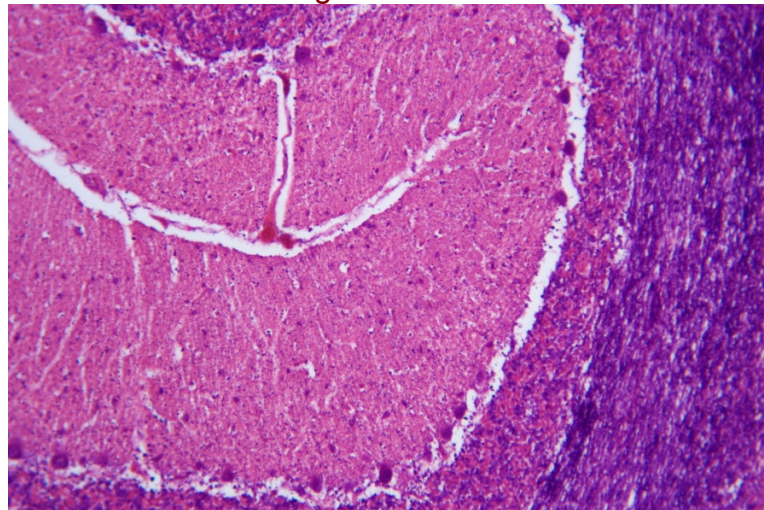


Figure XI-4-53. Dog (Canis lupus familiaris) cerebellum sec, 100X

Insert figure here. Use file 46-rabbit-Ochotona-sp-spinal-cord-cs-40X.jpg

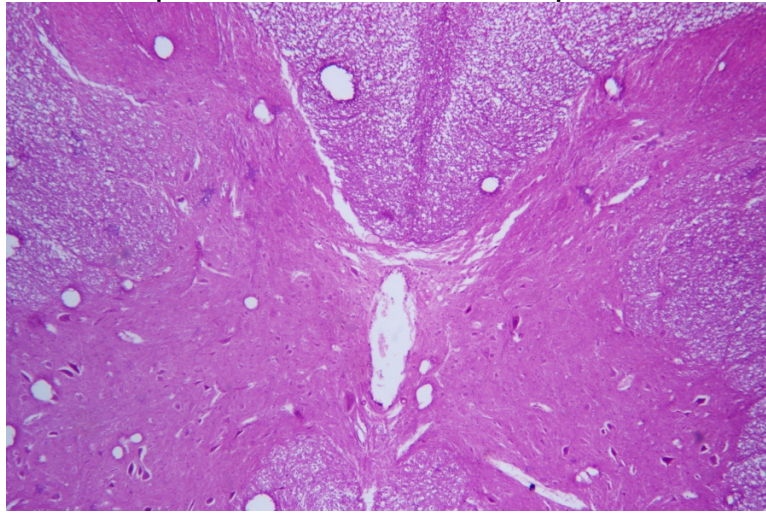


Figure XI-4-54. Pika (Ochotona sp.) spinal cord cs, 40X

Insert figure here. Use file 47-pika-Ochotona-sp-Motor-Nerve-Ending-wm-100X.jpg

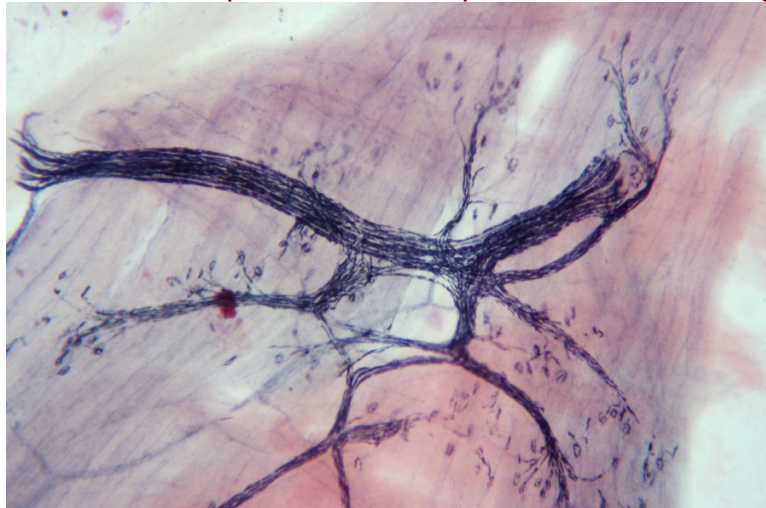


Figure XI-4-55. Pika (Ochotona sp.) motor nerve ending wm, 100X

Review Questions

??? Production: Please strip the answers (formatted as comments) from the final layout. RBT

1. How can you discriminate visually between stratified epithelium and pseudo-stratified epithelium? Why might a stratified epithelium appear pseudo-stratified in a sectioned slide?

Stratified epithelium is made up of two or more layers of cells, each with a nucleus.
Pseudo-stratified epithelium is made up of only one layer of cells, although the nuclei appear at different levels, giving the impression of multiple cell layers. In a sectioned slide of stratified epithelium, some of the cells may have been sectioned so that their nuclei don't appear in the section, giving the appearance of anucleate cells.

2. In sections, which types of epithelial cells resemble fried eggs, squares, and thin rectangles, respectively?

Squamous, cuboidal, and columnar.

3. What difference characterizes mammalian erythrocytes from the erythrocytes of other vertebrates?

Although immature mammalian erythrocytes are nucleate (contain nuclei), mature mammalian erythrocytes are anucleate. With very few exceptions the erythrocytes of other vertebrates are nucleate.

4. Of the four major components of human blood—plasma, erythrocytes, leukocytes, and platelets—which, if any, are not properly classified as cells? Why?

Of the four, only leukocytes are properly referred to as cells. Plasma contains no cellular material, but is simply a fluid matrix. Human erythrocytes do not contain nuclei (the presence of a nucleus is the defining characteristic of eukaryotic cells), and are therefore properly considered cell fragments. Leukocytes are true cells. Platelets are cell fragments.

5. How can you distinguish mature erythrocytes produced by mammals from those produced by other vertebrates?

Mature mammalian red blood cells are anucleate (have no nuclei), while those from other vertebrates have prominent nuclei.

6. What purposes do leukocytes and platelets serve?

Leukocytes (white blood cells) are part of the immune system. They attack and consume foreign invaders such as bacteria and fungi. Platelets play an essential role in blood clotting.

7. What difference did you note in the sections of hyaline and flexible cartilage?

Hyaline cartilage appears much more densely-packed, almost bone-like. Flexible cartilage has a much looser structure, with the presence of numerous less densely-packed fibers, and appears more muscle-like.

8. What similarities and differences exist between the extracellular matrices of cartilage and bone?

Both matrices consist of collagen fibers distributed in a substrate. In cartilage, that substrate is relatively soft and flexible chondrin. In bone, the substrate is hard and rigid bone mineral.

9. Which types of muscle tissue are classified as involuntary? As striated?

Cardiac muscle tissue and smooth muscle tissue are involuntary. Skeletal muscle tissue and cardiac muscle tissue are striated.

10. How do striated muscle tissue and smooth muscle tissue differ in terms of power and endurance?

Striated muscle tissue contracts powerfully, but has relatively little endurance. Smooth muscle tissue contracts relatively weakly, but can do so for extended periods of time without diminution or loss of contractile function.

11. How are dendrites and axons similar and different?

Both are cytoplasmic extensions of the cell bodies in neurons, and both transmit nerve impulses. Dendrites are relatively short and typically receive inbound nerve impulses, while axons are much longer and typically transmit outbound nerve impulses.

12. How do nerves differ from neural pathways?

Nerves are found only in the peripheral nervous system, are made up of peripheral axons, and do not contain neuron cell bodies. Neural pathways are found in the central nervous system, and consist of full neurons including cell bodies.